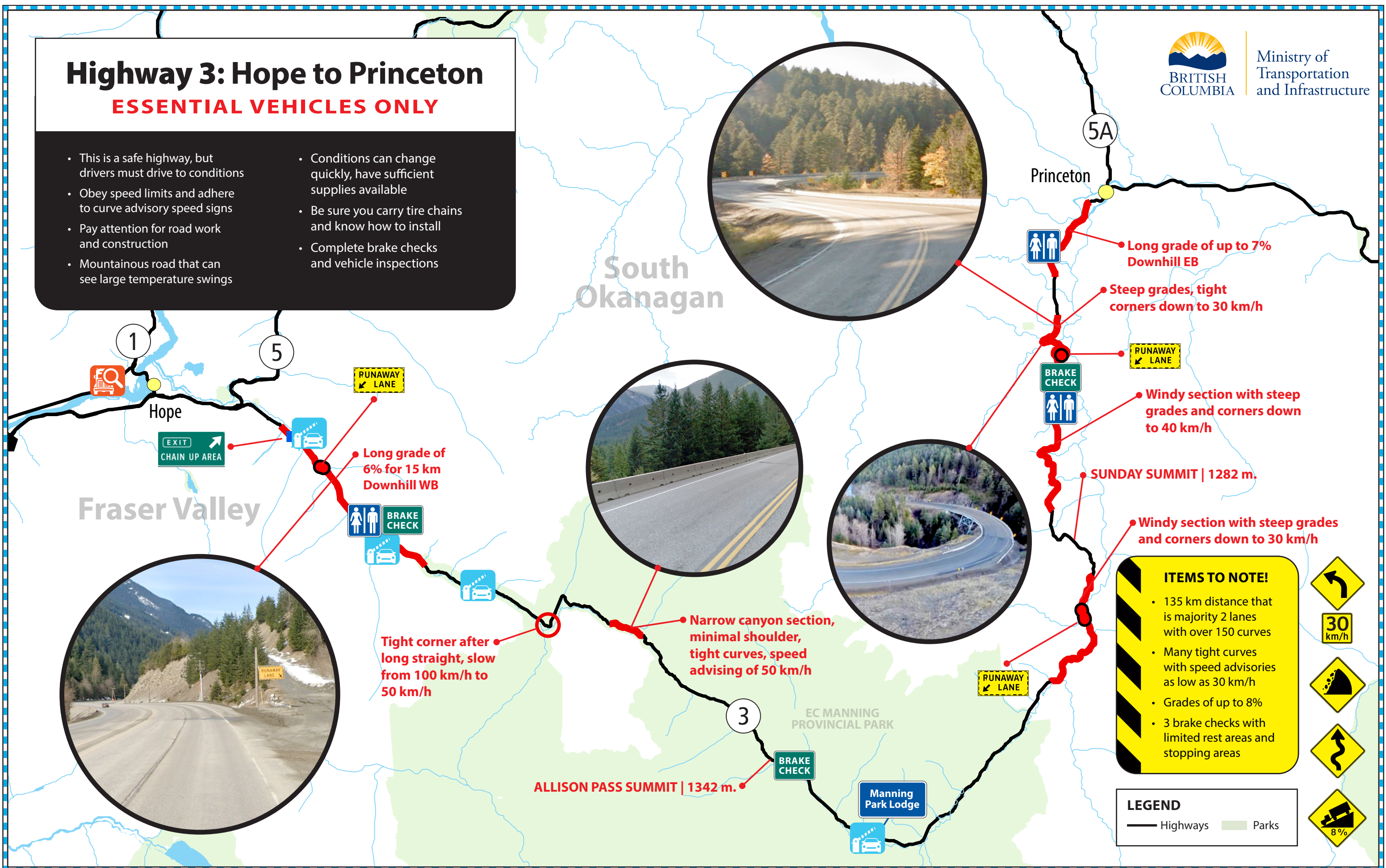


# Highway 3: Hope to Princeton

## ESSENTIAL VEHICLES ONLY

- This is a safe highway, but drivers must drive to conditions
- Obey speed limits and adhere to curve advisory speed signs
- Pay attention for road work and construction
- Mountainous road that can see large temperature swings
- Conditions can change quickly, have sufficient supplies available
- Be sure you carry tire chains and know how to install
- Complete brake checks and vehicle inspections



**ITEMS TO NOTE!**

- 135 km distance that is majority 2 lanes with over 150 curves
- Many tight curves with speed advisories as low as 30 km/h
- Grades of up to 8%
- 3 brake checks with limited rest areas and stopping areas

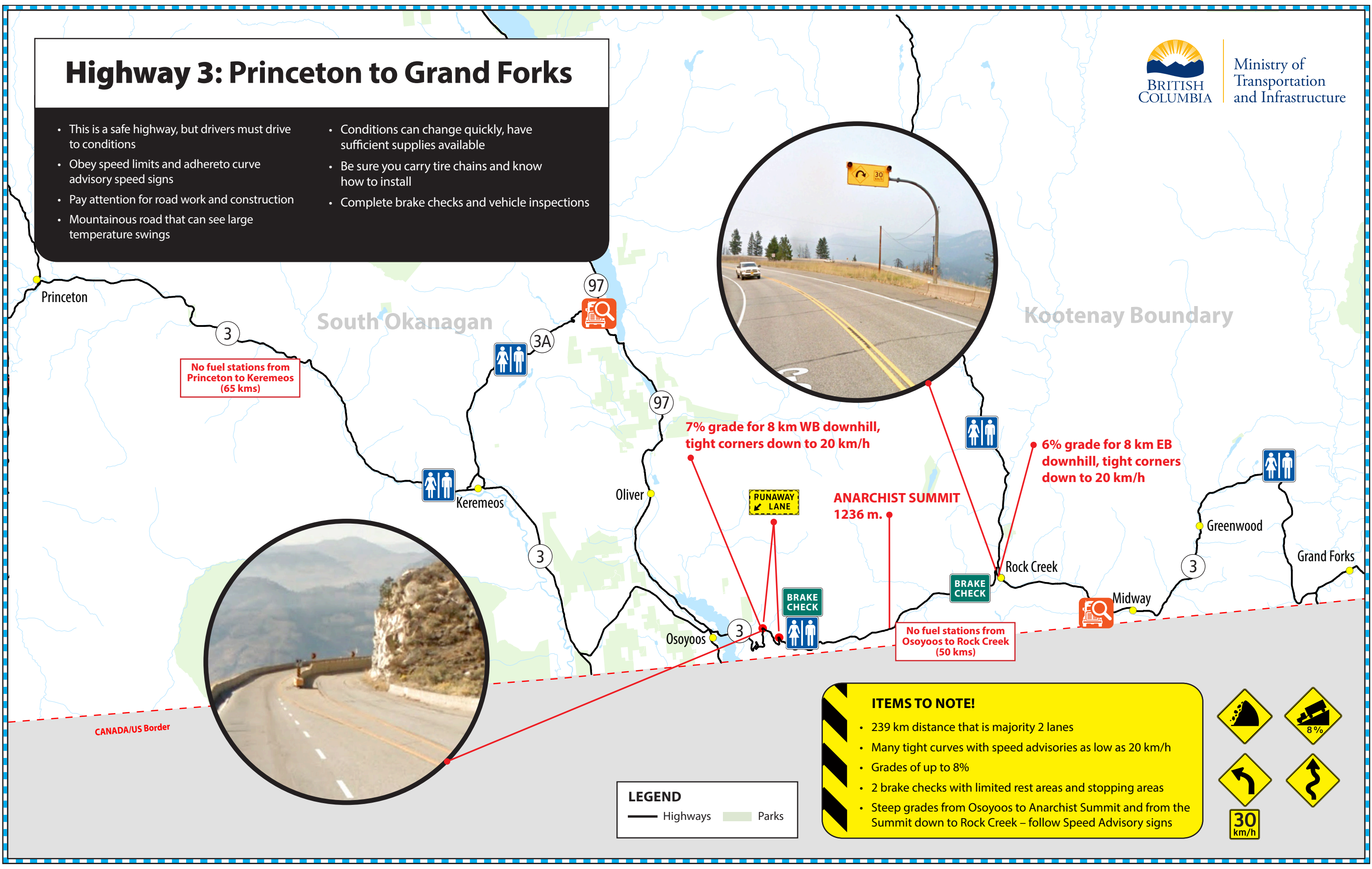


**LEGEND**

- Highways
- Parks

# Highway 3: Princeton to Grand Forks

- This is a safe highway, but drivers must drive to conditions
- Obey speed limits and adhere to curve advisory speed signs
- Pay attention for road work and construction
- Mountainous road that can see large temperature swings
- Conditions can change quickly, have sufficient supplies available
- Be sure you carry tire chains and know how to install
- Complete brake checks and vehicle inspections



No fuel stations from Princeton to Keremeos (65 kms)

7% grade for 8 km WB downhill, tight corners down to 20 km/h

6% grade for 8 km EB downhill, tight corners down to 20 km/h

No fuel stations from Osoyoos to Rock Creek (50 kms)

**ITEMS TO NOTE!**

- 239 km distance that is majority 2 lanes
- Many tight curves with speed advisories as low as 20 km/h
- Grades of up to 8%
- 2 brake checks with limited rest areas and stopping areas
- Steep grades from Osoyoos to Anarchist Summit and from the Summit down to Rock Creek – follow Speed Advisory signs



**LEGEND**

- Highways
- Parks

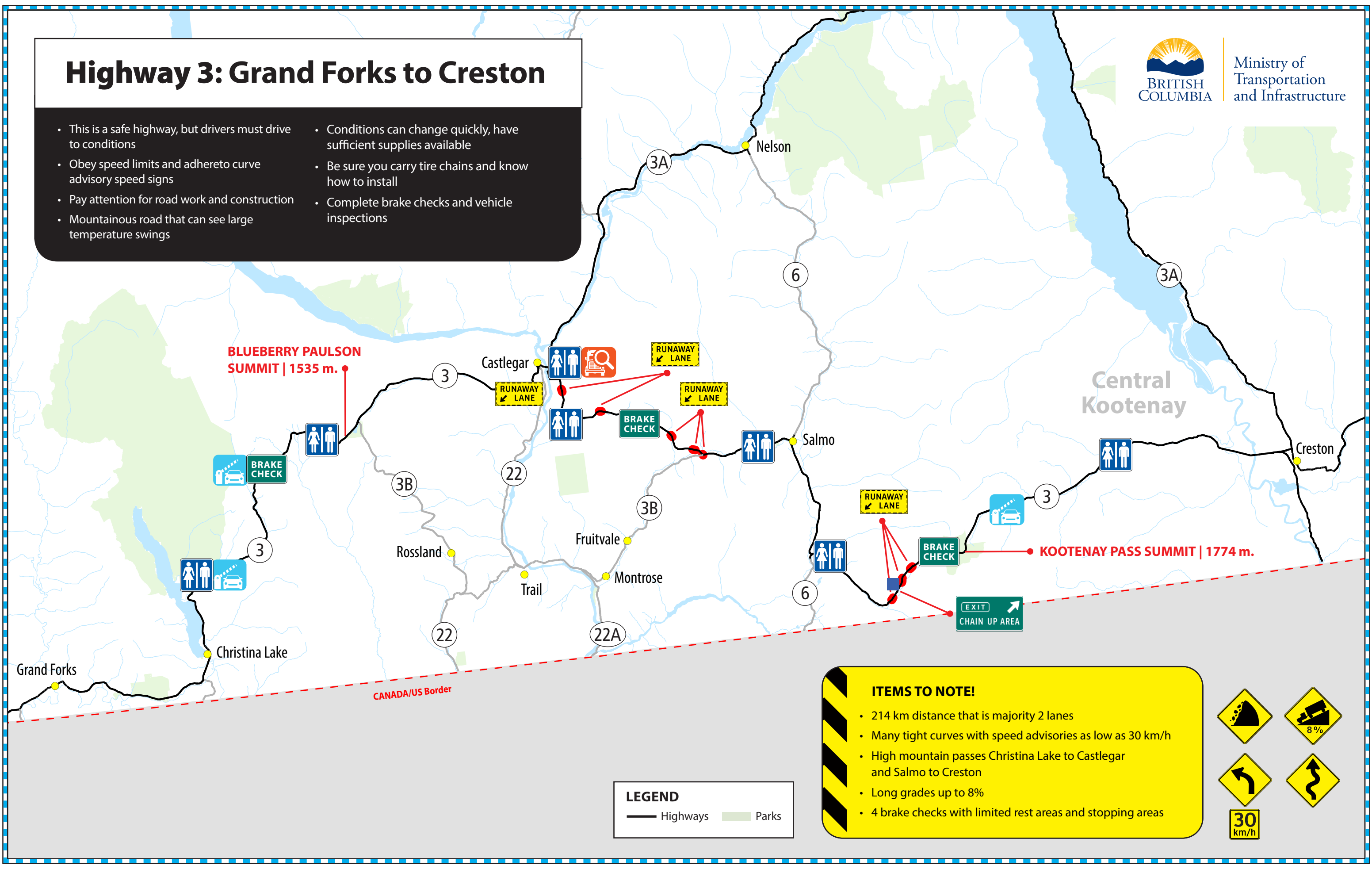


# Highway 3: Grand Forks to Creston



Ministry of Transportation and Infrastructure

- This is a safe highway, but drivers must drive to conditions
- Obey speed limits and adhere to curve advisory speed signs
- Pay attention for road work and construction
- Mountainous road that can see large temperature swings
- Conditions can change quickly, have sufficient supplies available
- Be sure you carry tire chains and know how to install
- Complete brake checks and vehicle inspections



**LEGEND**

- Highways
- Parks

**ITEMS TO NOTE!**

- 214 km distance that is majority 2 lanes
- Many tight curves with speed advisories as low as 30 km/h
- High mountain passes Christina Lake to Castlegar and Salmo to Creston
- Long grades up to 8%
- 4 brake checks with limited rest areas and stopping areas



# Highway 3: Creston to Alberta Border

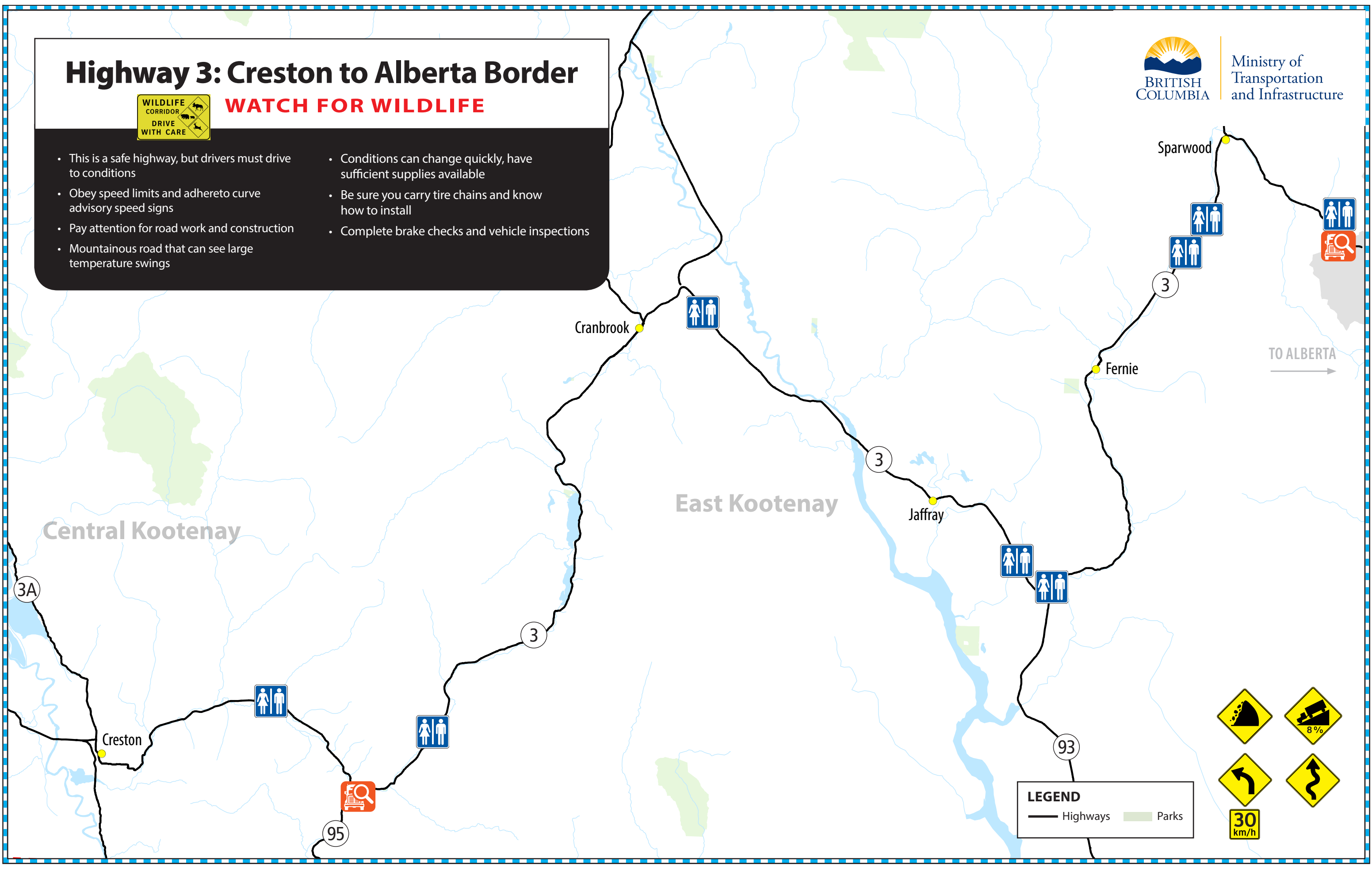


## WATCH FOR WILDLIFE

- This is a safe highway, but drivers must drive to conditions
- Obey speed limits and adhere to curve advisory speed signs
- Pay attention for road work and construction
- Mountainous road that can see large temperature swings
- Conditions can change quickly, have sufficient supplies available
- Be sure you carry tire chains and know how to install
- Complete brake checks and vehicle inspections



Ministry of Transportation and Infrastructure



**LEGEND**  
— Highways    Parks

30 km/h